

Macrorhythm Fills

Lead Hand / Support Hand

R 1 R 1 R 1 R 1 R

R 1 1 R 1 1 R 1 1 R 1 1 R

Macro

R 1 1 R 1 1 R 1 1 R

R 1 1 R 1 1 R 1 1 R R

R 1 1 R 1 1 R 1 1 R R

Macro

R 1 1 R 1 1 R 1 1 R

Macrorhythm Fills

A musical staff showing a sequence of notes with accents (>) and triplet markings (3). The notes are grouped into two sets of triplets, followed by a final note with an accent.

R 1 1 R 1 1 R 1 R 1 1 F R

A musical staff showing a sequence of notes with accents (>) and triplet markings (3). The notes are grouped into two sets of triplets, followed by a final note with an accent.

R 1 1 R 1 1 R 1 R 1 1 F R

A musical staff showing a sequence of notes with accents (>) and triplet markings (3). The notes are grouped into two sets of triplets, followed by a final note with an accent. There are 'x' marks under some notes in the second triplet of each set.

R 1 1 R 1 1 R 1 R 1 1 F R

Macro

A musical staff showing a sequence of notes with macro markings (brackets above the notes). The notes are grouped into two sets of macro notes, followed by a final note.

A musical staff showing a sequence of notes with accents (>) and triplet markings (3). The notes are grouped into four sets of triplets, followed by a final note with an accent.

R 1 1 R 1 1 R 1 1 R 1 1 R 1 1 R R

A musical staff showing a sequence of notes with accents (>) and triplet markings (3). The notes are grouped into four sets of triplets, followed by a final note with an accent.

R 1 1 R 1 1 R 1 1 R 1 1 R 1 1 F R

Macrorhythm Fills

A musical staff showing a sequence of rhythmic patterns. The first four patterns consist of a triplet of eighth notes with an accent (>) over the first note. The fifth pattern is a single eighth note with an accent (>) over it. The staff ends with a double bar line.

R 1 1 R 1 1 R 1 1 R 1 1 R 1 1 F R

A musical staff showing a sequence of rhythmic patterns. The first two patterns consist of a triplet of eighth notes with an accent (>) over the first note. The third pattern is a triplet of eighth notes with an accent (>) over the first note and a cross (x) over the second note. The fourth pattern is a triplet of eighth notes with an accent (>) over the first note. The fifth pattern is a single eighth note with an accent (>) over it. The staff ends with a double bar line.

R 1 1 R 1 1 R 1 1 R 1 1 R 1 1 F R

A musical staff showing a sequence of rhythmic patterns. The first four patterns consist of a triplet of eighth notes with an accent (>) over the first note and a cross (x) over the second note. The fifth pattern is a single eighth note with an accent (>) over it. The staff ends with a double bar line.

R 1 1 R 1 1 R 1 1 R 1 1 R 1 1 F R

Macro

A musical staff showing a sequence of rhythmic patterns. The first two patterns consist of a quarter note followed by an eighth note with an accent (>) over it. The third pattern is a triplet of eighth notes with an accent (>) over the first note. The fourth pattern is a triplet of eighth notes with an accent (>) over the first note. The fifth pattern is a triplet of eighth notes with an accent (>) over the first note. The staff ends with a double bar line.

R 1 1 R 1 1 R 1 R 1 1 R R

A musical staff showing a sequence of rhythmic patterns. The first two patterns consist of a triplet of eighth notes with an accent (>) over the first note. The third pattern is a triplet of eighth notes with an accent (>) over the first note. The fourth pattern is a triplet of eighth notes with an accent (>) over the first note. The fifth pattern is a single eighth note with an accent (>) over it. The staff ends with a double bar line.

R 1 1 R 1 1 R 1 R 1 1 F R

Macro

A musical staff showing a sequence of rhythmic patterns. The first two patterns consist of a quarter note followed by an eighth note with an accent (>) over it. The third pattern is a triplet of eighth notes with an accent (>) over the first note. The fourth pattern is a triplet of eighth notes with an accent (>) over the first note. The fifth pattern is a triplet of eighth notes with an accent (>) over the first note. The staff ends with a double bar line.

R 1 1 R 1 R 1 1 R 1 R 1 R

Macrorhythm Fills

R I I R I R I I R I R I R R I I R I R I I R I R I R

Macro

R I R I I R I R I R I R R

R I R I I R I R I R I R R R I R I I R I R I R I R R

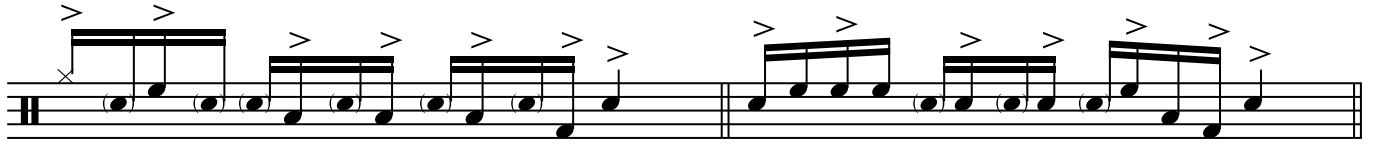
R I R I I R I R I R I R R R I R I I R I R I R I R R

Free Hand

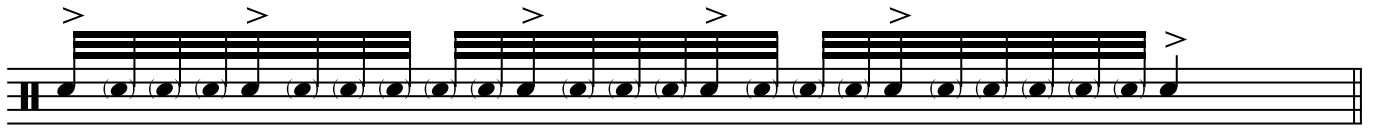
R I R I I R I R I R I R I F R

R I R I I R I R I R I F L R I R I I R I R I R I F L

Macrorhythm Fills



R l R l l R l R l R l F L R l R l r L r L r L r F L



R l r r L r l l r r L r l l R l r r L r l l r r L

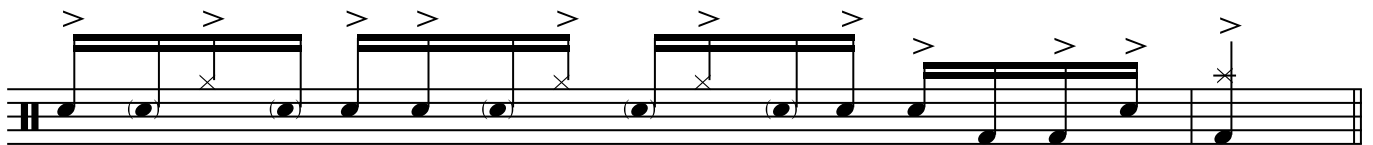


R l r r L r l l r r L r l l R l r r L r l l r r L

Macro



R l R l R L r L r L r L R l R L R



R l R l R L r L r L r L R F F L R

Macrorhythm Fills

A musical staff in treble clef with a key signature of one flat. It contains four groups of four eighth notes, each with an accent (>). The notes are G4, A4, B4, and C5. The final note of the piece is G4 with an accent and a fermata.

R l R l R L r L r L r L R l R L R

A musical staff in treble clef with a key signature of one flat. It contains four groups of four eighth notes, each with an accent (>). The notes are G4, A4, B4, and C5. There are rests in the second and fourth notes of the second and fourth groups. The final note of the piece is G4 with an accent and a fermata.

R l R l R R l R l R l R R l R L R

A musical staff in treble clef with a key signature of one flat. It contains four groups of four eighth notes, each with an accent (>). The notes are G4, A4, B4, and C5. The first two notes of the first and third groups are beamed together and marked with a triplet '3'. The final note of the piece is G4 with an accent and a fermata.

R l l R l l R l R l l R l l R l l R R ll R L R

Macro

A musical staff in treble clef with a key signature of one flat. It contains four groups of four eighth notes, each with an accent (>). The notes are G4, A4, B4, and C5. The first two notes of the first and third groups are beamed together and marked with a triplet '3'. The final note of the piece is G4 with an accent and a fermata.

R l l r r L R l l R l l r r L R l l R l R l l R R

A musical staff in treble clef with a key signature of one flat. It contains four groups of four eighth notes, each with an accent (>). The notes are G4, A4, B4, and C5. The first two notes of the first and third groups are beamed together and marked with a triplet '3'. There are rests in the second and fourth notes of the second and fourth groups. The final note of the piece is G4 with an accent and a fermata.

R l l r r L R l l R l l r r L R l l R l R l l R R

Macrorhythm Fills



R l l r r L R l l R l l r r L R l l R l R l l R R